

ARCHITECTURE

PERFORMANCE HALL OF THE TAIPEI MUSIC CENTER

A DYNAMIC AND CREATIVE HUB

TAIWAN

RUR Architecture DPC



Jun Hsiao and Shih-Wei
Chen are partners of the studio,
and the architecture design
team in Taipei, operating at a
wide range of scales.



Fei & Cheng Associates



The architectural firm
founded in 1974 by Fei
Pei and Cheng Ching is based
in Taipei, Taiwan.



South-east elevation - Scale 1:500



North-west elevation - Scale 1:500

Although a global phenomenon, pop music occurs in every different format, making it also a highly regional urban genre. Despite the common aim of search, devotion, enthusiasm and value taking place at the virtual, high-technology level, the practices and spirits of pop music is still closely linked to a particular cultural and geographical area.

Areas of the massive importance of musical events and their great popularity – and with an eye to recognizing the mighty Japanese music industry – Taiwan's government and Ministry of Culture held a competition some 10 years ago for the country's own music venue. As well as a competition bid for the production and performance of pop music, the Taipei Music Centre also had to offer a broad set of music services such as cafes, restaurants, and retail, making it a 24-hour venue attracting a wide range of visitors regardless of the particular concerts and shows on the bill.

Shaohe Unimetro and Jesse Reiss of New York-based BBK Architecture won the competition with a project for a pop-centric hub and entertainment venue attracting people from both Taipei and the surrounding area.

Stepping in as one of the densely occupied city and open countryside on a former industrial landscape, the Taipei Music Centre is made up of three main areas – the Performance Hall, the Creative Arts Building, and the Exhibition Hall.

The final area is the extensive public space for open-air events. Surrounded by cafes, restaurants and retail stores, it forms a contemporary landscaped urban plaza, including residents of the fast-developing districts nearby, can access throughout the day. The Creative Arts Building and the Exhibition Hall are aligned along an east-west axis and linked by an extensive open public plaza.

On the other side of Eric Boesendorff and created by an oval-shaped void, the Performance Hall is designed for indoor and outdoor performances, seating 4,000 inside and also accommodating several hundred outside at the public plaza.

The exterior, metal-clad silhouette of this large arena retains hints back to ancient oval theatres. Its steel frame is an octagonal-grid across face of horizontal and vertical elements.

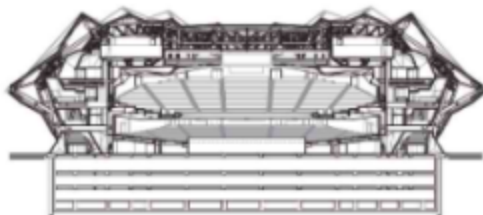
The ground floor features south overhang, covering entrance fan-shaped glazed voids. The angled structure defines the exterior and avoids steel to leave space for the perforated metal that provides light into the hall, further unifying the connection with the other sections of the Taipei Music Centre and the nearby city.

The diagonal ground floor columns and angle-polyhedral glazing wrap-up the complexity of the three-dimensional metal clad shell. A granite region with a seating capacity of 4,000, the imposing exterior shell becomes a prominent feature on the Taipei skyline, a landmark from afar. Its global metal surfaces reflect the natural light into the building, like the valleys eliminating the distance between interior and exterior.

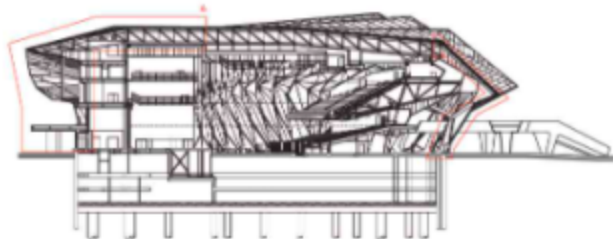
Together, the Creative Arts Building, the Exhibition Hall and Performance Hall allow the Taipei Music Centre to host a broad set of shows, ranging from concerts by world famous artists, attracting thousands to emerging talents that draw different audiences but also have important implications for the local pop music industry.

Designed to engage with flagship Asian entertainment venues, the Taipei Music Centre is much more than a collection of event spaces. It is a vibrant new district of the wider city.

Designed to compete with flagship Asian entertainment venues, the Taipei Music Centre is much more than a collection of event spaces. It is a vibrant new district of the wider city.

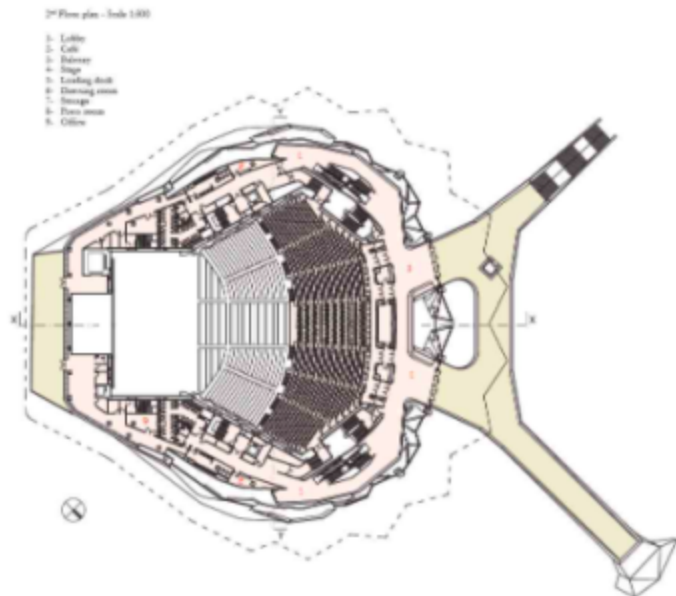
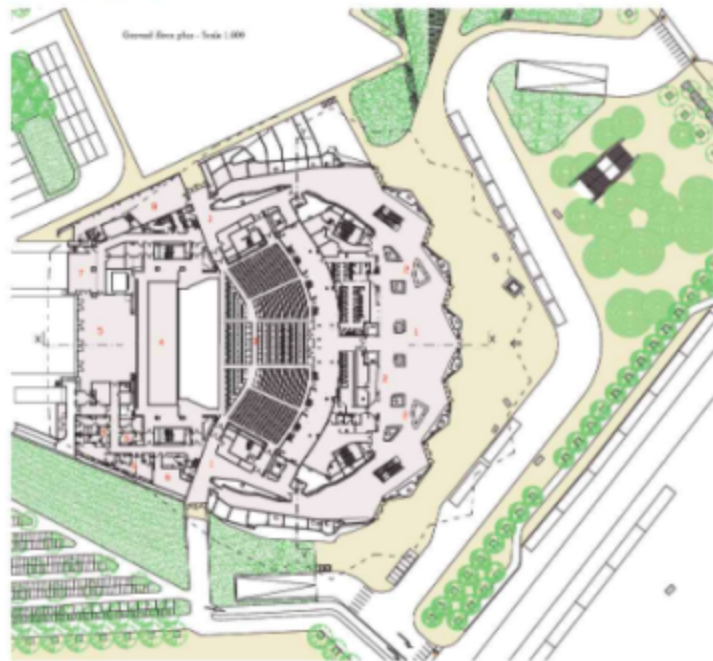
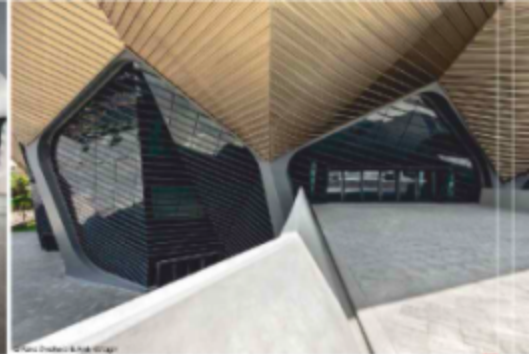


TV Section - Scale 1:500



XXI Section - Scale 1:500







© 2019 HOK & AEC



© 2019 HOK & AEC

CREDITS

Location: Taipei, Taiwan
Completion Date: 2019 (North side) - Client: Ministry of Culture of Taiwan, Taipei City Government
Site Area: 19,223 m² - Gross Floor Area: 70,300 m² - Architect: RUR Architecture DPC - Principals: Jesse Reiser, Naoko Usenoto
Design Team: Jesse Reiser, Naoko Usenoto, Neil Cook, Michael Ovedy, Juan De Marco, Hilary Simon, John Murphy, Ken Hedger, Efsthacia Xanthoulis, Toshiki Hixano, Ryosuke Imada, Jay Wang, Maximiliano Ossi, Xiao Lai, Jasmine Lee - Architect of Record: Pei and Cheng Associates (Philip Pei, Michael Pei, Mei Chung, Angela Yang, Si-Hung Shen) - Main Contractor: Chun Yuen Construction

Consultants

Structural: ARUP, Supatek
Façade: Neichard; Façade Technology - Theater and Acoustics: ARUP

Text by Cristina Teets

All images courtesy of RUR Architecture DPC & Pei and Cheng Associates